



# RESOURCE GUIDE

Workplace Safety, Inspections, Maintenance, Material Handling and Fall Safety





# CONTENTS

Inspections	4
Repairs, Maintenance & Installations	12
Preventative Maintenance	20
Sustainability & Customer Portal	22
Product Families	26
Overhead Lifting Products	28-37
Enclosed Track Crane Systems	38-39
Ergonomic Safety Products	40-57
Fall Protection Products	58-63
Netting Safety Products	64-71
Engineered Fall Protection Solutions	72-73
Fixed Access Ladders	74-75
Design Engineering	76
Custom Fabrication	78

Every client we work with wants to ensure that their employees have a safe environment to work in every day. Safety to our team means that our products, equipment, inspections, and installations meet and exceed every safety regulation and compliance standard for worker safety. We focus on providing turnkey solutions that protect your employees so they can do their jobs safely and efficiently.

**We design, we build, we inspect, and we maintain.**



# DON'T GET LOST IN A SEA OF INSPECTIONS

## YOUR RESPONSIBILITY

As an employer, there are a number of routine inspections that you are responsible to have completed, documented, and available should an incident happen in your facility, or you are subject to an inspection from a Ministry of Labour inspector. Many OHSA regulations are wrapped up in a mix of legalese and engineering jargon that makes them difficult to interpret.

Both Liftsafe Engineering and Service Group, and PARCS use a six-step inspection process that allows you to cut through all the bureaucratic noise. By offering a complete and accurate certification process, we ensure your equipment is "safe to use" as per OHSA requirements. Our commitment to regular training for our technicians ensures that our client inspections are always done by qualified inspectors.

Learn more about how we bring this all together in one digital solution. (page 24)



## STANDARDS & CERTIFICATIONS



Professional Engineers  
Ontario





# LIFTSAFE ENGINEERING AND SERVICE GROUP INSPECTIONS

Under Part II of the Canada Labour Code, employers have a duty to protect the health and safety of any person in their employ or to whom they provide access to the workplaces they are responsible for. The Code also enumerates a series of specific obligations that employers must meet. Regular workplace inspection and compliance with minimal requirements prescribed in the Canada Occupational Health and Safety Regulations are probably the two best ways of fulfilling those responsibilities.

SCAN ME



BROWSE INSPECTIONS



View  
Certificates

Load all of your safety and inspection certificates in your mobile/app browser, which can be easily panned or magnified on your screen.



## OVERHEAD EQUIPMENT

Overhead Cranes  
Electric Hoists  
Pneumatic Hoists  
Chain Falls  
Lever Hoists  
Vacuum Lifters  
Trolleys  
Stacker Cranes  
Mobile Cranes  
Lifting Support Structures  
Air Balancers  
Spring Balancers



## MATERIAL HANDLING

Die Carts/Pump Carts  
Dock Levellers  
Dumper/Lift Tables  
Lift Trucks  
Racking Structures  
Transfer Carts



## AUTOMOTIVE SHOP

Automotive Hoists  
Jack Stands  
Automotive Jacks  
Engine Hoists



## ATTACHMENTS & RIGGING

Crane Hooks  
Chain Slings  
Web Slings  
Eye Bolts & Hoist Rings  
Lift Assists  
Below the Hook Attachments



## MISCELLANEOUS

Support Stands  
Special Needs Equipment  
Ground Support Equipment

AS REQUIRED BY





# FALL PROTECTION EQUIPMENT INSPECTIONS

Working at heights is work in any place at, above, or below ground level, where a person could be injured if they fell from that place. Access and egress to a place of work can also be considered working at heights. If your workers face fall hazards, you're required to provide them with fall protection equipment and training.

Under Ontario's Occupational Health and Safety Act (OHSA), employers must take every reasonable precaution to protect workers from hazards. They must provide information and instruction and ensure that workers properly use the required equipment and that the equipment is properly inspected, so it is safe to use. Otherwise, employers, supervisors, and workers can be prosecuted for not complying with the law.

INSPECTION	REQUIREMENT	POINTS INSPECTED
Fall Arrest Equipment	Annual	10+
Fall Arrest Support Systems	Annual	10+
Fixed Access Ladders	Annual	10+
Ladders	Annual	10+
Man Lifts	Annual	10+
Davit Crane/Base	Annual	15+

## 10 AND 5 YEAR MAN LIFT COMPLIANCE INSPECTIONS



In accordance with CSA B354, a structural inspection shall be performed 10 years after the date of manufacture and every 5 years thereafter. These inspections must be carried out under the direction of a licenced professional engineer.

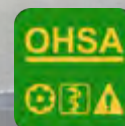
## ROOF ANCHOR PULL TESTING

### Inspection frequency:

Annual inspection of existing anchors required as per CSA Z91 (7.3.2.1). New anchors require inspection and testing as per CSA Z91 (7.3.1) and CSA Z271 (6.3.2b).

**Points inspected:** 5+

AS REQUIRED BY





# PARCS INSPECTIONS

Under Part II of the Canada Labour Code, employers have a duty to protect the health and safety of any person in their employ or to whom they provide access to the workplaces they are responsible for. The Code also enumerates a series of specific obligations that employers must meet. Regular workplace inspection and compliance with minimal requirements prescribed in the Canadian Occupational Health and Safety Regulations are the two best ways of fulfilling those responsibilities.



The PARCS Customer Portal allows clients to see the inspection and repair history of their equipment.



SCAN ME



BROWSE INSPECTIONS



AS REQUIRED BY



## OUTDOOR INSPECTIONS

- Playgrounds
- Playground Surface Attenuation
- Flagpoles
- Fences
- Outdoor Sports Products
- High Jump/Long Jump Pits
- Track & Field Equipment
- Softball Backstop
- Light Poles



## BUILDING INSPECTIONS

- Fixed Access Ladders
- Roof Anchor Pull Testing
- Loading Docks
- Overhead Doors
- Bleachers
- Wall Dividers
- Stage Production
- Special Needs Equipment



## GYM & ATHLETIC INSPECTIONS

- Basketball Assemblies
- Volleyball Equipment
- Floor Sockets
- Gymnastic Equipment
- Climbing Walls
- Score Boards
- Mats
- Weight Rooms



## AUTOMOTIVE INSPECTIONS

- Automotive Jacks
- Jack Stands
- Automobile Lifts
- Tire Balancers
- Frame Pullers
- Engine Hoists
- Automotive Shop Audits



## TECHNICAL SHOP INSPECTIONS

- Machine Guarding
- Manual Chain Hoists
- Electric Hoists
- Shop Equipment
- Shop Equipment Assessments
- Home Economics Appliances



# 24/7 ON-SITE SERVICE & REPAIRS



Request  
Service

Automatically populated with your name and email address, your request will be submitted directly to the Liftsafe team from your mobile browser/app.



SCAN ME



SEE REPAIR SERVICES

We know that downtime is one of the most expensive costs a facility can incur. Our technicians work with your operation schedule and time constraints to fulfill your repair needs. We offer repair services for cranes, hoists, and various other industrial equipment, which include planned repairs, preauthorized repairs, and on-call repairs.

Our vision and goal is simple: get you up and running as quickly, safely, and cost-efficiently as possible.



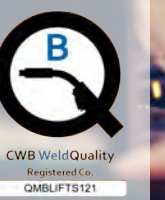
## 24 HOUR SERVICE

We offer 24-hour Emergency Service, 7 days a week, 365 days a year.



## ON-SITE REPAIRS

Our team of fully equipped technicians are mobile and will travel to your facility to repair any of your faulty equipment.



## ON-SITE WELDING

Qualified Canadian Welding Bureau (CWB) welders offer exceptional quality and service at your facility.



# INDUSTRIAL INSTALLATIONS



## REPAIRS, MAINTENANCE & INSTALLATIONS

### CRANE & HOIST SYSTEMS



### MATERIAL HANDLING



### CONVEYOR NETTING



### AUTO LIFTS



### FALL PROTECTION EQUIPMENT



### PLATFORMS



### GUARDRAIL



### RACK NETTING



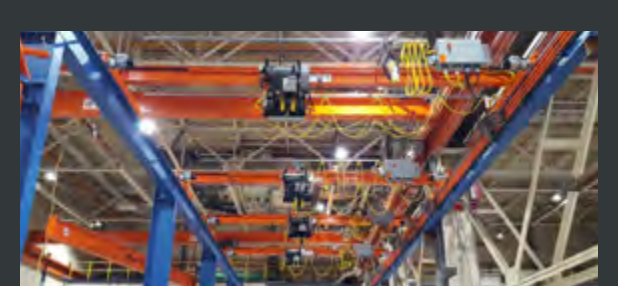
### OVERHEAD TRACKS



### FIXED ACCESS LADDERS

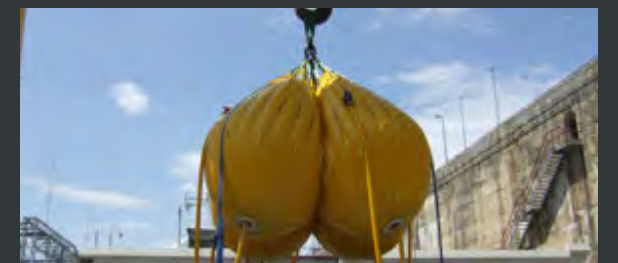


### RELATED SERVICES



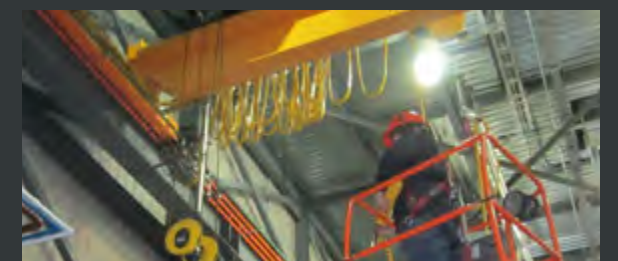
#### CRANE RELIABILITY ANALYSIS

Having a crane reliability analysis completed in order to determine how long your crane will remain reliable is an integral process in planning for future capital expenditures.



#### LOAD TESTING

Load testing for compliance.  
Load testing for commissioning.  
Load testing for braking functionality.  
Load testing for holding functionality.



#### PRE-START HEALTH AND SAFETY REVIEWS

OHSA 851, Section 7 requires any new construction, addition, installation or modification of a lifting device, travelling crane or automobile hoist to undergo a PHSR conducted by a professional engineer.



PARCS was contracted to install a Playworld playground design supplied by New World Park Solutions consisting of a junior area, ages 2-5 (4051 sq ft), a senior area ages 5-12 (5768 sq ft) and a sandbox area (1211 sq ft) at RBJ Schlegel Park in Kitchener, ON.

SCAN ME



SEE PARCS SERVICES

# PLAYGROUND REPAIRS & INSTALLATIONS



Our dedicated installation and repair team consists of accredited CPSI Inspectors, licenced millwrights, and installers, combining to provide over 35 years of playground installation experience. Having such a diversified and experienced installation team allows us to quickly address and resolve any potential problems while ensuring deadlines are upheld within the scope of each project.

## SURFACING

Selecting and maintaining your playground surfacing is a critical component in playground safety.

## PLAYGROUND BORDERS

Keep your playground surfacing inside your playground by installing a playground barrier.

## REPLACEMENT COMPONENTS

We offer replacement and new parts, complete install and if necessary re-inspection services.

## RELOCATIONS

Proper removal and reinstallation of existing playground equipment. Precautions are taken to eliminate damage and to make sure safety standards are met when reinstalled.

## RETROFITTING

Retrofitting your playground is one method in which you can bring your existing structure up to safety standards.

## THIRD PARTY INSPECTIONS

We offer this inspection should you have a new playground installed, relocated or modified.

## ACCESSIBILITY UPGRADES

Helping you put together and install playgrounds and equipment that incorporate universal design principles that benefit all children.





## COMMITTED TO SAFETY

We pride ourselves on our competent and highly trained professionals. Ensuring the safety of your staff and the community is our highest priority. Our service team is rigorously trained on manufacturers' equipment and is regularly tested. Our repairs are completed ensuring that current standards and regulations are taken into consideration at the time of repair, so you can have confidence that each piece of equipment at your facility are safe.

### TRAIL GATES



### BASKETBALL NETS



### FIXED ACCESS LADDERS



### PARK PAVILIONS



### GUARDRAIL



### SPORTS NETTING



## RELATED SERVICES



### AUTOMOTIVE LIFT INSTITUTE (ALI) SERVICES

Verified qualification for automotive lift inspections through the Automotive Lift Institute Lift Inspector Certification program. PARCS is a verified ALI member company with ALI certified inspectors on staff.



### MACHINE GUARDING

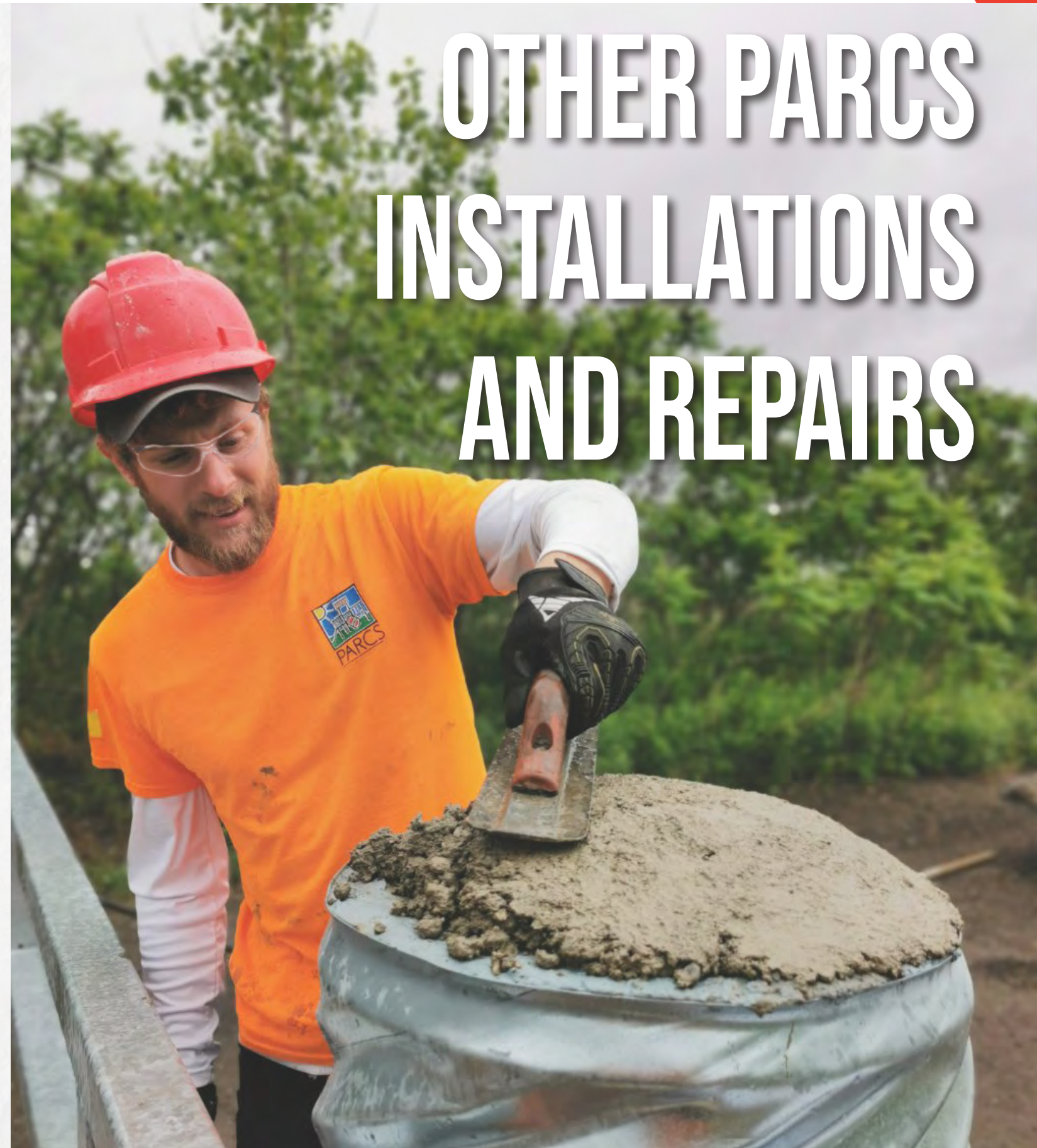
Once your machine guarding solution has been installed, we will prepare and design a training and education session, including all necessary signage and certificates to ensure you are compliant.



### PRE-START HEALTH AND SAFETY REVIEWS

In accordance with Regulation 851 of the OHSA, Section 7 has a requirement to address the safe use of machinery. Under item (11), the PHSR shall be conducted by a professional engineer.

# OTHER PARCS INSTALLATIONS AND REPAIRS





# PREVENTATIVE MAINTENANCE



SCAN ME



PM PLUS PROGRAM

## COST VERSUS INVESTMENT

### AD HOC REPAIRS

- Reactive
- Higher cost average for repair
- Unexpected downtime



### PREVENTATIVE MAINTENANCE

- Proactive
- Lower cost average year over year
- Works with your planned outage PM schedule

The Liftsafe Group of Companies works with our clients to deliver preventative maintenance programs across the different channels we work with through Liftsafe Engineering and Service Group for industrial maintenance and through PARCS for municipal and educational settings.

Liftsafe Engineering and Service Group offers six inspection plans, based on your current service needs and the qualifications of your staff, to ensure your compliance with current OHSA and CSA standards.

- **Class A & B:** Infrequent and light service — We offer Periodic, PM Plus or Compliance plans based on whether or not you have qualified maintenance personnel to perform routine inspections, maintenance and repairs.
- **Class C & D:** Moderate and heavy service — We offer Periodic, PM Plus or Compliance plans based on the crane interval recognition guides available in CSA B167-16, the CMAA Crane Service Classifications standards or other specific crane classifications not listed.

By scheduling routine repairs, maintenance work, and inspections, we will not only help prevent equipment safety issues, breakdowns, and compliance violations, but also help avert component failure.

These programs also have the added benefit of helping to avoid unnecessary production downtime, which can lead to significant losses for your business.


PARCS works with education and municipal clients through a customized preventative maintenance program that monitors and prevents outdoor equipment failure and keeps that equipment up-to-date with OHSA and CSA standards.

By scheduling routine repairs, maintenance work, and inspections, PARCS helps to prevent equipment safety issues, breakdowns, compliance failures and component failures, which in turn protect our clients against liability claims. Most importantly, this protects the people (big and small) that enjoy the equipment we maintain.





# SUSTAINABILITY IN PRACTICE



**ELIMINATE PAPER WASTE**

Complementing our existing Liftsafe Customer Portal, the user-friendly Liftsafe Mobile App features the ability to view certificates and request service, all from your smart phone. See more on page 24

Phone: 519 896-2430

Over the past three decades of business development and growth, the Liftsafe Group of Companies has always looked for new strategies to improve how we can serve our clients in a more sustainable way. In 2001, we began providing our customers with a secure online system to allow our clients to schedule and keep track of their inspections and repairs. By 2010, that system evolved into G10, the leading digital solution in the industry. Over the years, we have invested time and resources into creating sustainable practices by which we conduct our business.



## WASTE MANAGEMENT

Responsible waste disposal and sustainable packaging material initiatives.

## CONSUMPTION

Retrofit light fixtures, ride sharing initiatives, manpower and logistics to minimize fuel consumption.



## EDUCATION

Educate and influence channel partners on paperless inspection best practices and digital initiatives.

[liftsafegroup.com/about-us/values](https://liftsafegroup.com/about-us/values)



# SUSTAINABLE RECORDKEEPING COMPLIANCE

## THE LIFTSAFE AND PARCS CUSTOMER PORTALS

### ORDERS TAB

Detailed breakdown of work performed and associated billing.

### INSPECTIONS TAB

View, organize and download your inspection data and certificates.

### HISTORY TAB

View and compare past inspection and maintenance forms.

### INVENTORY TAB

Track and manage your equipment, in multiple locations and book one or multiple inspections.

### SCHEDULE TAB

Track upcoming and past service in one convenient place.



### QUOTES TAB

Approve, decline and comment on active repair and inspection quotes.

### MAINTENANCE FORMS TAB

House maintenance records for each piece of equipment.

### VISIT SUMMARY TAB

Detailed reports on each work order performed.



### SCAN ME



FIND OUT MORE

Upgrade from paper records and start managing your inspections and repairs more efficiently with 24/7 access to your reports at your fingertips.





# PRODUCT FAMILIES

Overhead Cranes	30
Workstation Bridge Cranes	32
Gantry Cranes	33
Jib Cranes	34
Hoists	36
Enclosed Track Crane Systems	38
Drum, Barrel and Pail Handling	42
Lift-O-Flex	44
Roll Handling	46
Vacuum Handling	50
Tuggers	52
Cart Movers and Motorized Carts	54
Work Positioners and Push Carts	56
Rooftop Guardrail Systems (RoofGuard)	60
Rack Netting (RackGuard)	66
Truck and Barrier Netting	68
Conveyor, Pit and Sports Netting	70
Engineered Fall Protection Solutions	72
Fixed Access Ladders	74



# OVERHEAD LIFTING PRODUCTS

Being an approved dealer for leading brands like GH, Spanco, Gorbel, Kito, CMCO, R&M and Movomech allows Liftsafe to provide you with the system you need rather than trying to sell you a system based on what we have.

## JIB CRANES

Offering jib cranes in multiple capacities, types, sizes, and options for overhead lifting. Our jib crane designs offer lifting support for loads ranging anywhere from 100 lbs. to 30,000 lbs., with custom options available.

- Wall or Column Mounted
- Tie-Rod
- Freestanding
- Portable
- Ceiling Mounted



## HOISTS

Access a wide variety of hoists to suit your lifting and material handling needs. Rely on our in-house engineering, design, fabrication, and installation team to deliver from our comprehensive list of hoist systems on the market. CMAA and CSA compliant.

- Wire Rope Hoists
- Lever Hoists
- Hand Chain Hoists
- Powered Chain Hoists
- Pneumatic Hoists



APPROVED DEALER

**GH**  
CRANES & COMPONENTS

**SPANCO**  
Inc.

**GORBEL**  
A CLASS ABOVE

**KITO**

**CMCO**  
COLUMBUS MCKINNON  
CORPORATION

**R&M**  
MATERIALS HANDLING

**movomech**<sup>®</sup>

Phone: 519 896-2430

## OVERHEAD LIFTING PRODUCTS



## WORKSTATION BRIDGE CRANES

Designed to eliminate manual lifting and enable/empower your workers to move loads from workstation to workstation. These systems are ideal for moving loads ranging anywhere from 250 lbs. to 4000 lbs.

- Freestanding Workstation Bridge Cranes
- Ceiling Mounted Workstation Bridge Cranes

## GANTRY CRANES

Our gantry cranes are built with a runway located on the floor rather than the ceiling. Ideal for applications where lifting support is required without the use of building columns or structural supports.

- Rail Mounted Gantry Cranes
- Portable Gantry Cranes
- Adjustable Gantry Cranes
- Semi-Gantry Cranes



## OVERHEAD CRANES

Offering a wide variety of overhead crane systems, also known as bridge cranes. These lifting systems are manufactured with elevated parallel runways, which typically run the full length of the facility.

- Single Girder Top Running Overhead Cranes
- Single Girder Under Running Overhead Cranes
- Double Girder Top Running Overhead Cranes
- Double Girder Under Running Overhead Cranes

SCAN ME

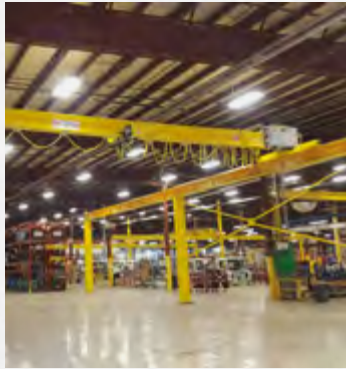


BROWSE OUR SOLUTIONS



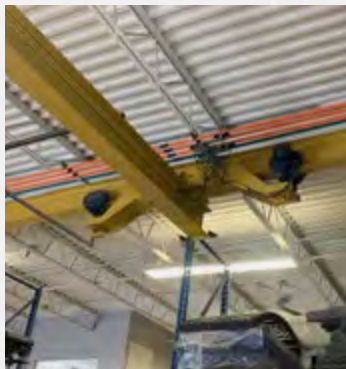
liftsafeinspections.com/overhead-lifting-systems





### SINGLE GIRDER TOP RUNNING

Our Single Girder Top Running Overhead Cranes are designed to travel on top of a runway system that can be either supported by engineered columns or existing building columns.



### SINGLE GIRDER UNDER RUNNING

An under running crane is usually supported by the building's structure and has the trolley and hoist running on the bottom flange of the bridge. The crane is bolted to the I-beam, which gives the crane additional stability. These cranes are also known as "underhung."



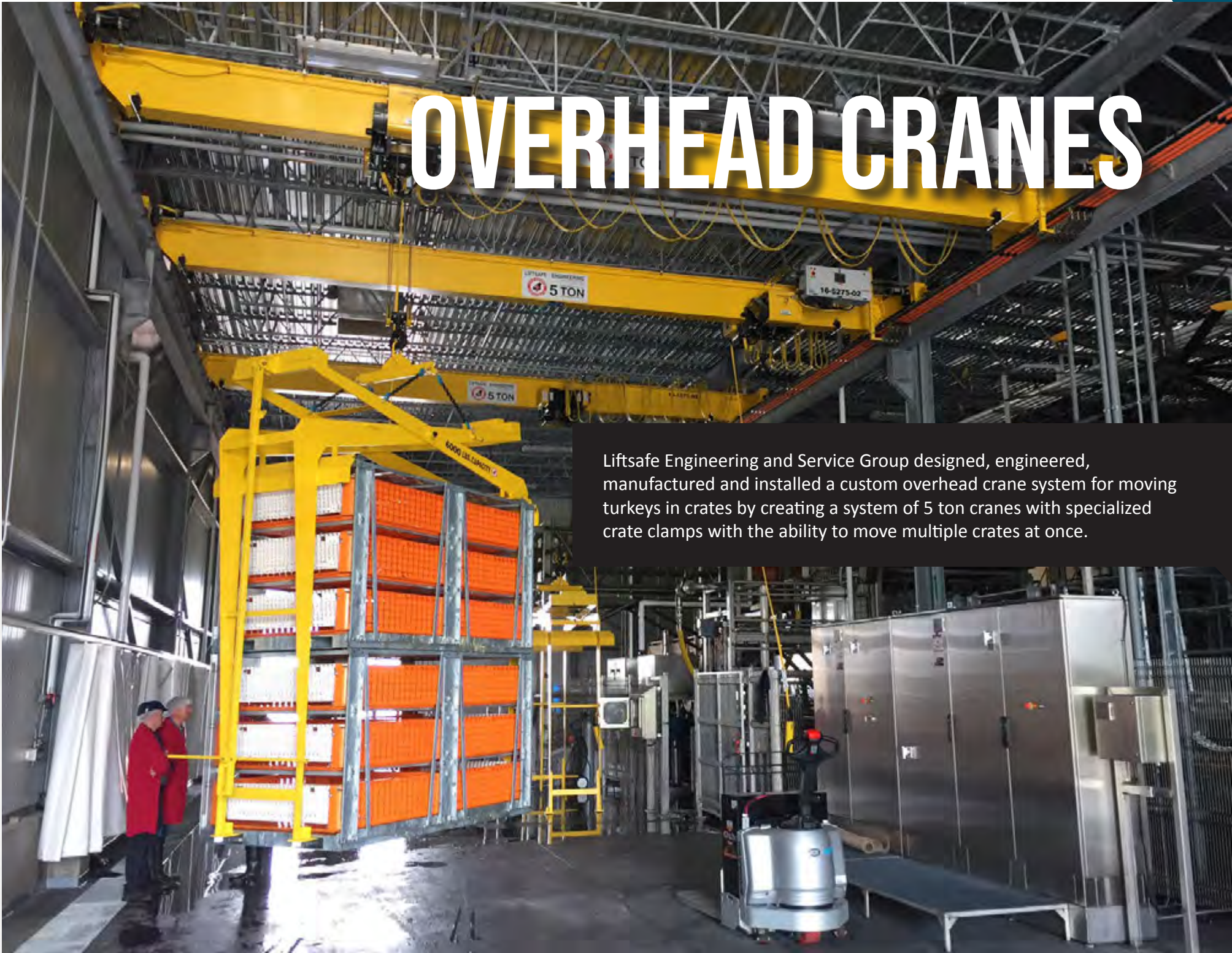
### DOUBLE GIRDER TOP RUNNING

Our Double Girder Top Running Overhead Cranes are designed to travel on top of a runway system, supported by engineered columns or existing building columns. These double girder systems can provide a better lift height.



### DOUBLE GIRDER UNDER RUNNING

Ideal for facilities lacking excess vertical clearance while also requiring extra capacity. Although this type of crane is rare, our team of in-house engineers has the capability and experience of designing double girder under running cranes as a complete lifting solution.

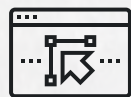


# OVERHEAD CRANES

Liftsafe Engineering and Service Group designed, engineered, manufactured and installed a custom overhead crane system for moving turkeys in crates by creating a system of 5 ton cranes with specialized crate clamps with the ability to move multiple crates at once.



CONCEPT



DESIGN



APPROVAL



FABRICATION



INSPECTION



INSTALLATION

Liftsafe Engineering offers a wide variety of overhead crane systems. These lifting systems are manufactured with elevated parallel runways, which typically run the full length of the facility. A hoist is then used to lift and handle the load as it travels along the span of the bridge. Our systems offer lifting support for loads ranging anywhere from 1 to 100 tons (depending on span), with custom options available in both top running and under running cranes.



# WORKSTATION BRIDGE CRANES



Designed to eliminate manual lifting and enable workers to move loads from workstation to workstation. These systems are ideal for moving loads ranging anywhere from 250 lbs. to 6 tons along a bridge.

## FREESTANDING WORKSTATION BRIDGE CRANE



Capacity ranges from 250 lbs. to 6 tons. AISC Steel Construction Manual, OSHA 1910.179, ANSI B30.11, AWS D1.1/D1.6, and MMA MH27.2 certifications.

An effective and affordable lifting solution when you need overhead crane coverage for a large area or have a flexible production facility. These ergonomic push/pull systems can be installed anywhere on the facility floor, providing easy product movement, stability, positioning, and precision.

## CEILING MOUNTED WORKSTATION BRIDGE CRANE



Capacity ranges from 250 lbs. to 4,000 lbs. AISC Steel Construction Manual, OSHA 1910.179, ANSI B30.11, AWS D1.1/D1.6, and MMA MH27.2 certifications.

These systems are designed to allow for rapidly expanding runway lengths and bridges. To accommodate mechanical tasks or heavy transport loads, extra sections of track along the runway can be easily added or removed. They provide unlimited lifting coverage without sacrificing floor space and eliminate the need for steel supports.

# GANTRY CRANES

Gantry Cranes are built to move along the ground either with a runway on the floor or heavy duty locking casters (portable gantry cranes). They can be used both indoors and outdoors at a lower cost to overhead cranes. Ideal for applications where lifting support is required without the use of building columns or structural supports.



## PORTABLE

Portable gantry cranes are perfect for applications where you need a portable and economical way to lift materials anywhere in your facility.



## ADJUSTABLE

An economical way to lift materials anywhere within a facility at multiple heights. The casters enable you to move the gantry around your work area.



## SEMI

Our semi-gantry cranes maximize your space as one end moves over the floor on wheels, while the other end runs overhead on column-mounted beams and rail.



# JIB CRANES

Many of the clients we work with require multiple solutions to solve specific material handling applications. In this example, a series of freestanding jib cranes equipped with pneumatic hoists and specialized scissor tongs capable of picking up 10 steel billets at once were required. Tongs were attached as a below the hook attachment so the billets could easily be loaded on a scissor table (also supplied by Liftsafe) to create an efficient workflow for each station.

APPROVED DEALER



Phone: 519 896-2430

## JIB CRANES

### WALL OR COLUMN MOUNTED

Made for applications that require manoeuvring under obstructions or around obstacles, and there is an adequate wall/column to support the crane.

**Capacity (tons): From 5 - 10,000**

**Span (feet): From 4 - 25**



### TIE ROD

Two options available: full cantilever, ideal for maximizing headroom, and wall bracket, which is mounted to the wall. Each has a steel tie rod supporting the end of the jib.

**Capacity (tons): From 5 - 10,000**

**Span (feet): 20**



### FREESTANDING

Freestanding, floor-mounted jib cranes are versatile and best for heavy-duty, high productivity applications. Ideal for underneath large bridge cranes, in open areas serving several work stations, in outdoor applications (e.g. loading docks), or for machining and assembly operations.

**Capacity (tons): From 0.5 - 1**

**Span (feet): Up to 16**



### PORTABLE

The portable workstation jib crane can be mounted with a counterweight base to enable movement from one work area to another using a lift truck.

**Capacity (tons): Up to 1**

**Span (feet): Up to 16**



### CEILING MOUNTED

Can be stationary mounted or platform-supported, allowing for usage outside the standard bridge crane coverage. Cover multiple work cells with one crane and lifting device when mounted to a platform.

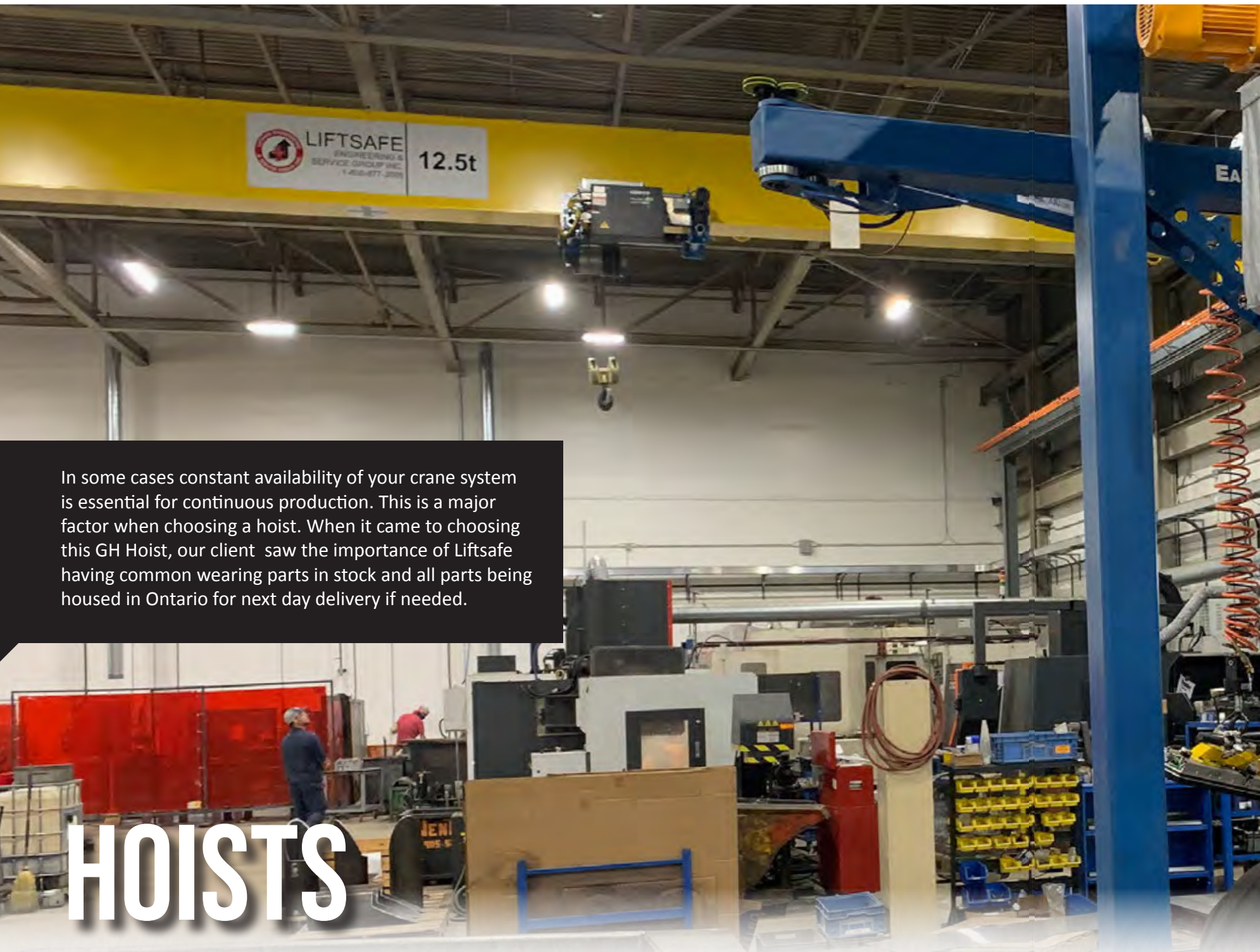
**Capacity (tons): Up to 1**

**Span (feet): up to 16**



[liftsafeinspections.com/jib-cranes](https://liftsafeinspections.com/jib-cranes)





In some cases constant availability of your crane system is essential for continuous production. This is a major factor when choosing a hoist. When it came to choosing this GH Hoist, our client saw the importance of Liftsafe having common wearing parts in stock and all parts being housed in Ontario for next day delivery if needed.

# HOISTS

Liftsafe Engineering offers a wide variety of hoists to suit your lifting and material handling needs. We offer a complete line of chain, wire rope, lever, and pneumatic hoists. Rely on our in-house engineering, design, fabrication, and installation team to recommend the right hoist for your application.

ASME, ANSI, OHSA, CMAA, and CSA compliant.

## WIRE ROPE

Wire rope hoists are ideal for construction, maintenance, and industrial applications with exceptional durability and reliability.

**Capacity (tons): From 0.5 - 138**

**Inventory: Over 400 models**

## ELECTRIC

Electric powered hoists are designed to lift and lower objects in a vertical plane. Compact headroom, hook suspension, and a range of other features makes the hoist easily adjustable for your specific workstation needs.

**Capacity (tons): From 0.125 - 20**

**Inventory: Over 450 models**

## PNEUMATIC

Air hoists, also known as pneumatic hoists, are available in both chain and wire rope configurations.

**Capacity (tons): From 0.125 - 7.5**

**Inventory: Over 100 models**

## LEVER

Lever hoists are often referred to as ratchet hoists and allow the operator to manually move a load through ratcheting movements.

**Capacity (tons): From 0.75 - 15**

**Inventory: Over 150 models**

## HAND CHAIN

Hand chain hoists are a reliable and efficient solution for facilities where electricity is impractical or unavailable.

**Capacity (tons): From 0.25 - 20**

**Inventory: Over 250 models**



## APPROVED DEALER





# ENCLOSED TRACK CRANE SYSTEMS

Enclosed tracks give you easy movement and a long lifespan on your lifting device. These light rail crane systems are both strong and lightweight and the 2-degree taper on the running flange helps centre the wheels on the track and prevent debris from settling on the rolling surface. This allows for a smooth, effortless movement of the trolleys and end trucks on your monorail system. Steel and aluminum systems are available.

APPROVED DEALER



## ADD-ONS



### SPRING BALANCERS

Tool balancers, load balancers, and spring balancers are an ideal way to balance a constant load.



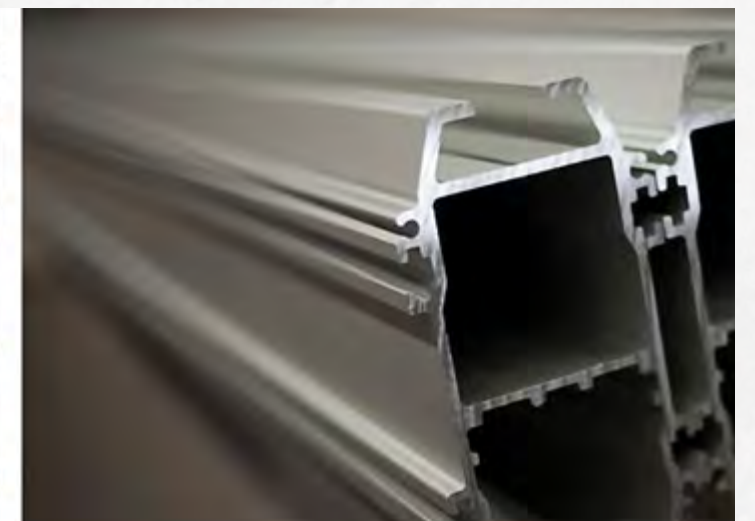
### INTELLIGENT LIFTING

Intelligent lifting devices combine the industry's finest, mechanical balancing technology with the intelligence of precise, reliable electronic controls.



### AIR BALANCERS

Air Balancers are designed to assist in ergonomically transferring loads, up, down or balance/float products safely and efficiently.





# ERGONOMIC SAFETY PRODUCTS

Your go-to Canadian supplier of material handling solutions designed to improve the productivity and safety of your workforce. Our industrial grade material handling solutions are built to withstand fast paced working conditions, with custom equipment options available through our in-house engineering team. Let our team engineer out the hazard and prescribe the right equipment solution for your facility.

With over 1000 standard products available, we can support your ergonomic equipment needs and install a vast variety of different products including:

## DRUM/PAIL HANDLING



## ROLL HANDLING



## VACUUM HANDLING



## TUGGERS



## CART MOVERS & MOTORIZED CARTS



## WORK POSITIONERS & PUSH CARTS



SCAN ME



BROWSE OUR SOLUTIONS

Golden Windows came to R&D Ergo with the goal of eliminating their operator's manual lifting of sliding glass doors, to reduce the number of operators at each station moving the panes.

R&D Ergo was able to work with their process engineer to come up with a vacuum based lifting solution that successfully lifted and manoeuvred large glass panels with their existing material handling equipment.



# DRUM, BARREL & PAIL HANDLING

FORWARD OR SIDE  
POURING



LIGHT DUTY



## BELOW THE HOOK



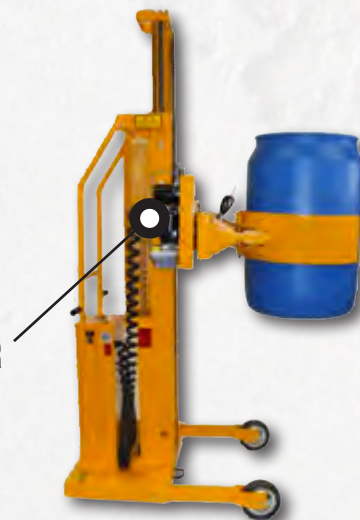
Our drum handling equipment is designed to lift, transport, tilt or rotate drums, barrels or pails of various sizes, weights and material construction. Options range from self propelled units to below the hook or forklift attachments and can be custom fit for your specific needs and environment. Accessories also available. Implementing drum handling equipment within your facility is the sure way to provide a safer, healthier and more efficient workplace for your employees by reducing manual lifting, pushing and pulling on the job.

MOVE MULTIPLE DRUMS



FORKLIFT ATTACHMENTS

MULTIPLE POWER  
OPTIONS



HEAVY DUTY

### LIFT, TURN AND POUR

Have full control over tilting, lifting and pouring drums. The safety conscious way for one person to easily handle heavy drums.

### STANDARDIZED CUSTOM SOLUTIONS

Standard solutions that come together to solve custom applications based on your specific needs, environment and usage.



PAILS, KEGS AND FIBRE DRUMS

APPROVED DEALER





# LIFT-O-FLEX

BY:



Lift-O-Flex systems are an innovative and adaptable solution that can bridge the gap between many different material handling applications.

## ROLL HANDLING



MODULAR ATTACHMENTS

3 STAGE  
FOOT BRAKE  
SYSTEM

ROTATING AND  
V-BLOCK  
ATTACHMENTS  
AVAILABLE

REMOTE CONTROL

LOADING PLATFORM

MAGNETIC OR VACUUM  
ATTACHMENTS  
AVAILABLE

SHEET HANDLING

FULL 360°  
ROTATION

MODULAR  
CONSTRUCTION

DRUM HANDLING

## SQUEEZE-O-TURN

Pick and place attachment that acts as an outside clamp grips from the outside while lifting and rotating drums and pails.



## EXPAND-O-TURN

Mechanical or pneumatic attachment that grips rolls via the inside of their core while lifting and rotating.



## LIFT-N-GLIDE

Below the hook solution that uses the same attachments as the Lift-O-Flex system.



PHARMACEUTICAL



FOOD AND BEVERAGE



CHEMICAL



PAPER AND PLASTICS



# ROLL HANDLING EQUIPMENT

## CORE GRIPPING

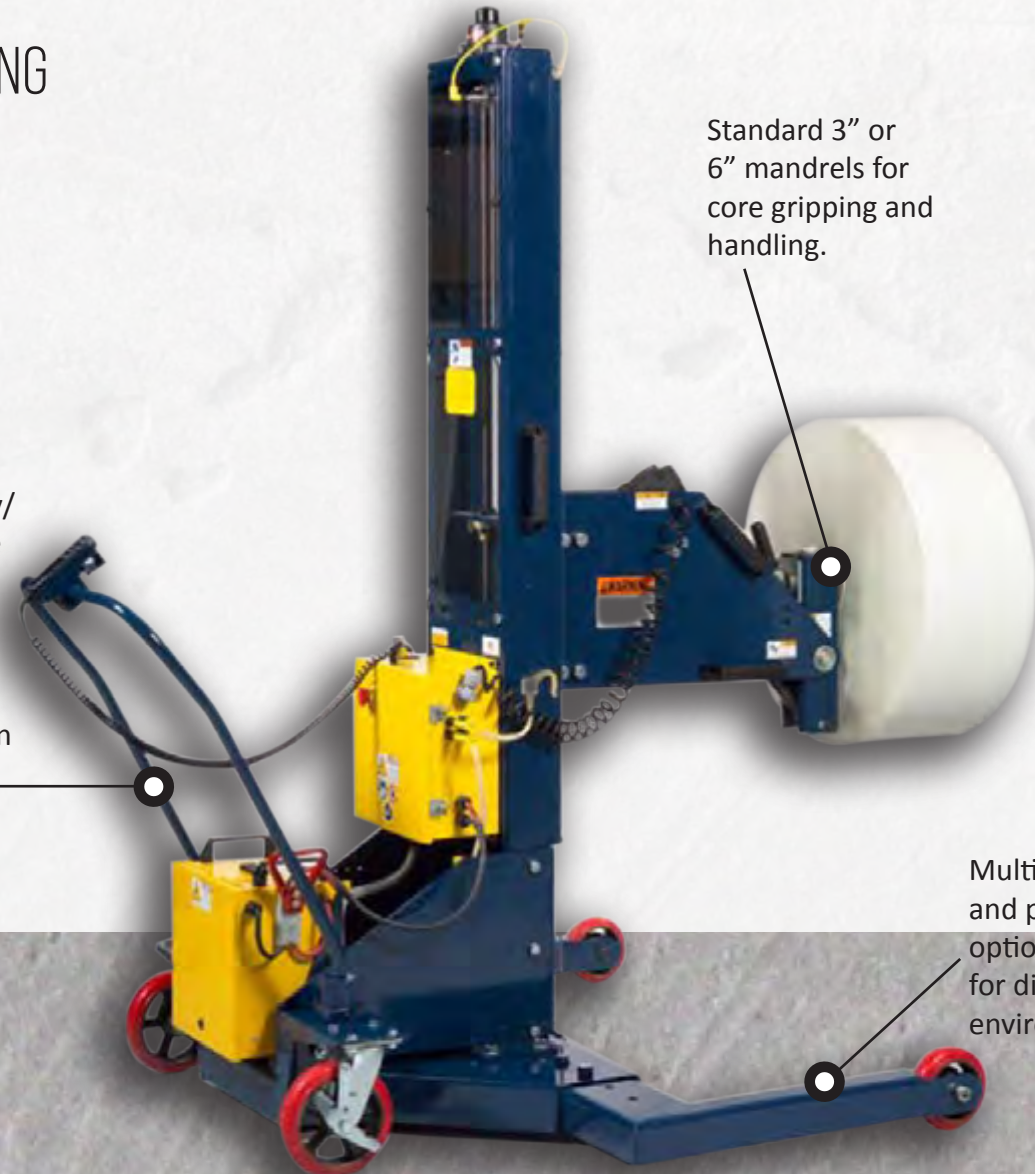
Allows for diversity/ adaptability on the job. More workers are now able to complete the task without physical limitations being an issue.

Moving rolls and reels through your facility can present a number of different health and safety issues. One of the main issues is the need to lift, rotate, and turn these objects safely. Roll handling equipment can help eliminate back, joint, and muscle injuries while increasing production output.

Our wide range of roll handling solutions are designed to specific standards with engineered safety factors that solve a wide variety of roll handling issues.

Standard 3" or 6" mandrels for core gripping and handling.

Multiple material and power options available for different environments.



## ROLL HANDLING

### HORIZONTAL

Roll handlers are designed mainly to move a roll from one point to another without having to change the horizontal orientation of the roll. The clamp fits on the outside of the roll and can move the roll up or down, forward or back, side to side.

### LIFT, TURN AND ROTATE

Roll handlers that are designed to change the orientation of a roll. This can be to turn, rotate, and lift. The clamp fits on the outside of the roll and the roll can be turned from a horizontal to vertical orientation, rotated in tight spaces, or between different machinery, among many other practical uses.

## OUTSIDE CLAMPING

Lift and turn rolls for palletizing, transporting and loading.

Portable units that can be optimized for your facility.





# BELOW THE HOOK



Options for below the hook roll handling units range from light duty (0-500 lbs.), heavy duty (500-5000 lbs.) and super duty (5000 lbs.+). Each has its own advantages for use in a variety of environments.

## MULTIPLE FUNCTIONS

CORE GRIPPING (LIFT & TURN)



CRADLE (HORIZONTAL)



CORE GRIPPING (VERTICAL)



APPROVED DEALER



Phone: 519 896-2430

## ROLL HANDLING

### ROLL MOVERS

The RollMover features a rugged steel frame construction and provides unmatched versatility in moving rollable loads. These units provide a safer, healthier workplace for employees while increasing efficiency and productivity. The RollMover makes it possible for a single person to move wheeled or rollable loads weighing up to 20,000 lbs.

These battery powered units eliminate the need for air hoses on the ground which reduces trip hazards and allows for free movement throughout your facility.



### DOLLIES AND CARTS

Rugged roll dollies are built with steel construction and have a powder-coated finish. These units are durable and can handle heavy loads with ease. Numerous options are available, including quick-mount handlebars and self-stacking posts to keep the dolly out of the way when not in use. These units come with options like built-in lift tables or rotating v-blocks and work well for moving rolls between stations.

ROTATING  
V-BLOCK



ROLL  
DOLLY



[rdergo.com/roll-handling](http://rdergo.com/roll-handling)



# VACUUM HANDLING

## BAG & BOX HANDLING



### CUSTOM SOLUTIONS

Customized solutions with standard parts designed to work with your product(s).

Vacuum handling equipment is an ideal ergonomic solution for manoeuvring products ranging in size and shape, helping to improve worker safety and efficiency. Vacuum lifters are often used to lift bags, boxes, sheets, and other products.

From heavy box handling to delicate glass manoeuvring, vacuum handling equipment is the perfect material handling solution. Our vacuum lifting systems can be tailored for your application with custom settings for speed and precision.

### COMPLETE CONTROL

Weight and capacity ranges are considered during the design process, our systems can handle multiple weights, textures and products without altering the system.



### FIT YOUR FACILITY

Designed to work in your specific facility's conditions, such as high heat, dust, humidity, moisture etc.

## APPROVED DEALER



Phone: 519 896-2430

## VACUUM HANDLING

## SHEET HANDLING

### IMPROVE PRODUCTIVITY

Drastic reduction in heavy/repetitive lifting with efficient lifting equipment for improved performance.



### REDUCE DAMAGES

Lifting sheets safely is often a challenging material handling problem as sheets are often bulky, heavy, and can be prone to damage.

### ERGONOMIC SOLUTION

Ergonomic controls for lifting, rotating or tilting materials.

### GLASS



Ensure glass lifting is effortless by removing the strain of manual handling with a reliable and proven glass vacuum lifter.

### METAL



Metal sheet handling can be a difficult process for your workforce that can cost excessive time and money.

### STONE



We offer production grade, steel-framed vacuum lifters for both smooth and/or rough stone handling.

### WOOD



Wood sheet vacuum handling systems are designed for handling rough or smooth wood surfaces.

[rdergo.com/vacuum-handling](http://rdergo.com/vacuum-handling)



# TUGGERS

Move heavy loads easily with our innovative powered tuggers. These battery powered material handlers are perfect for ensuring worker safety and increasing productivity when pushing or pulling heavy equipment. These products improve operator safety and are easy to use with no operation licence required. Each compact battery-powered motorized tugger combines superior traction and power to allow a single pedestrian operator to push, pull, and steer their loads with ease.



APPROVED DEALER



Phone: 519 896-2430

## POWERED TUGGERS



### MATERIAL HANDLING

The Ergo-Express® Motorized Electric Tugs are a safe and compact solution for moving heavy materials, equipment and supplies that are already on a wheeled base.



### HEALTHCARE

We offer multiple models of motorized tugs customized for the healthcare industry. Select the best fit for your towing capacity, hitching, footprint and budget needs.



### DATA CENTRE

The Ergo-Express® Motorized Server Rack Tugs are a safe and compact solution for moving server racks and other heavy server equipment like server cabinets and computer racks already on a wheeled base.



### UP TO 6,000 KG

Our small but powerful compact machines are capable of handling loads of up to 6,000 kg. From versatile and flexible SmartMovers to our MasterTugs and AT TOWs, we offer a range of solutions designed to meet your needs even in the most demanding of environments.



### UP TO 30,000 KG

Our Performance range is designed to improve safety and efficiency when moving loads of up to 30,000 kg, allowing a single pedestrian user complete control and total manoeuvrability.



### UP TO 360,000 KG

MasterMover's Performance Plus range of machines includes our PS3000+, our most powerful pedestrian electric tug to date. When linked together in a chain of 12 machines, the PS3000+ is capable of handling loads up to 360,000 kg.

[rdergo.com/tuggers](http://rdergo.com/tuggers)



# CART MOVERS & MOTORIZED CARTS

SCAN ME



BROWSE OUR SOLUTIONS

Our collection of cart movers and motorized carts are made for use in warehouses and industrial facilities to tow heavy loads with ease. Our battery powered units allow operators to move loads throughout your facility without the need for air hook ups and cords on the floor causing a trip hazard. These units are designed to specific standards with engineered safety factors that solve a wide variety of material handling issues.

## CART MOVERS

Ensure you have the correct material handling equipment when lifting, moving, or transporting loads to reduce back strain and avoid costly workplace accidents. Liftsafe carries a wide variety of ergonomic cart movers with the option of custom tooling to fit your specific application.

Battery operated units.

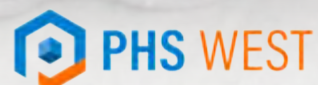


## MOTORIZED CARTS

Ergo-Express® Motorized Carts are a safe and efficient solution for moving heavy materials, equipment and supplies. With the Ergo-Express® power drive system, one staff member will have the ability to safely and efficiently perform the same task that may currently take multiple trips or staff members. All battery powered carts feature a state-of-the-art user interface, exclusive safety stop switch, and smart charging system for unparalleled performance.



APPROVED DEALER





# WORK POSITIONERS & PUSH CARTS

Our ergonomic work positioners and push carts are designed to enable the operator to move their work to positions or carry loads that are suitable for their needs. By allowing full flexibility to easily adjust to any comfortable work height or reduce the force needed to move a load, it's an economical solution to create a safe, comfortable workplace while reducing the potential for expensive work injuries.

APPROVED DEALER



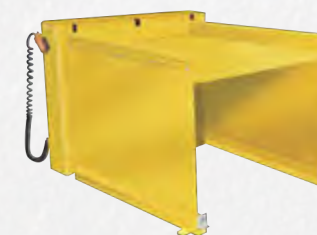
Phone: 519 896-2430

## STATIONARY WORK POSITIONERS



### TURNTABLES & CAROUSELS

Designed to safely turn products on pallets and platforms without damaging products or injuring employees.



### DRIVE-ON LIFT TABLES

Drive-on lift tables allow operators to safely manoeuvre items to different places and elevations within your facility.



### DUMPERS & UPENDERS

Dumpers and upenders allow you to safely tilt and pour items throughout your facility with reduced risk of employee injury.



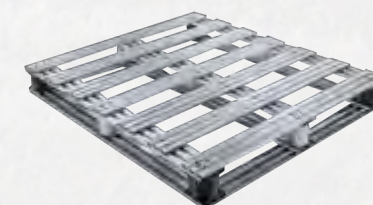
### LIFT TABLES

Reduce incidents of musculoskeletal disorders by correctly repositioning work at a suitable height for operators.



### TILTERS

Tilters allow operators to tilt heavy items or position loads to avoid standing, lifting or moving into awkward positions.



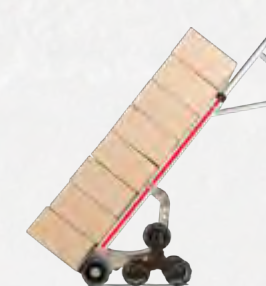
### PALLET RISERS & STEEL PALLETS

Designed to work together with devices like roll handlers, drum handlers and other specific ergonomic devices.



### STACKERS

Safely lift and stack products with an ergonomic stacker designed so you can avoid heavy lifting, repetitive strain, and other common employee injuries.



### HAND TRUCKS

Ergonomic hand trucks and accessories with industrial lifting, stair climbing and all-terrain capabilities.



### PUSH CARTS

Carts, shelf trucks, greenhouse carts and other service carts made of heavy duty materials capable of handling heavy loads.

rdergo.com



RoofGuard is a modular system that can be customized to fit different lengths and configurations. We worked with one of our distributor partners in the commercial roofing industry on a roof restoration that included providing edge protection of multiple areas needing custom configurations.

# FALL PROTECTION PRODUCTS

SCAN ME



BROWSE OUR SOLUTIONS

Falls and struck by object incidents are two of the most frequent sources of on the job injuries in North America. Meet federal and provincial safety requirements by working with Liftsafe Fall Protection to provide a fall protection system and/or safety netting system that meets all regulations in your province and comes with sign off from a professional engineer.

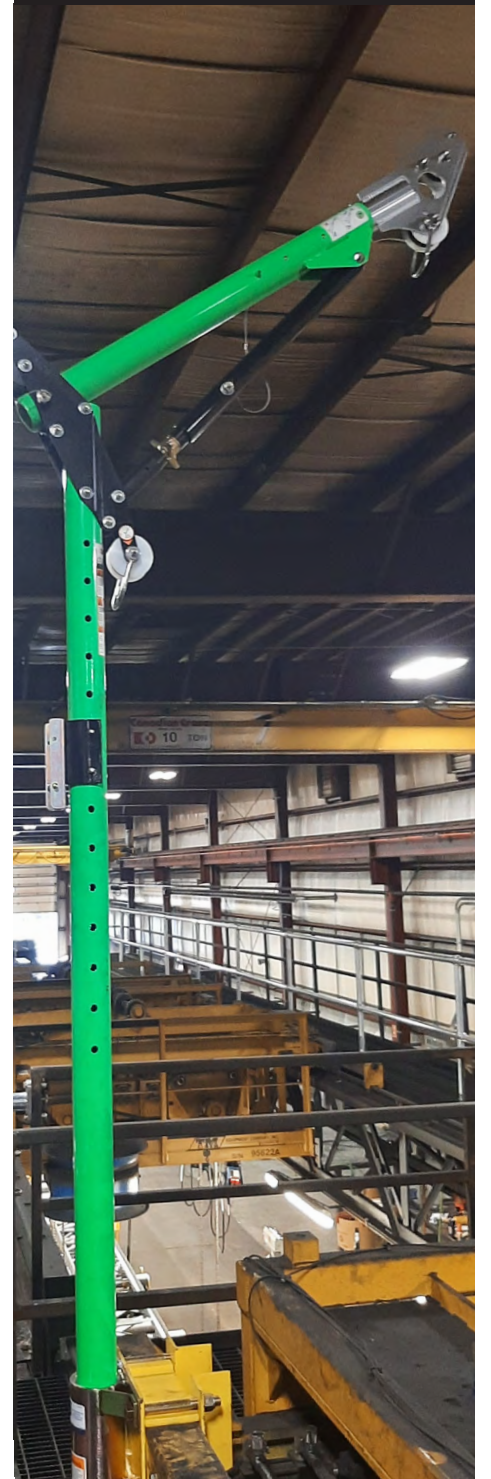
## ROOFTOP GUARDRAIL



## SAFETY NETTING SYSTEMS



## ENGINEERED SOLUTIONS





# PASSIVE FALL PROTECTION

According to the Canada Labour Code — OHSR Part 1 S 2.5 (1) and Part 12 S 12.07 (1), when work is being performed at heights (above 3 metres), fall protection is required. Further expanding on fall protection requirements, it is encouraged that wherever possible, passive fall protection systems like RoofGuard are used in favour of active systems.



SCAN ME



BROWSE OUR SOLUTIONS

## LADDERGUARD

Protection for egress while entering and exiting a ladder.

## ROOFWALK



Non-slip walkways for rooftops and elevated surfaces.

## ROOFGUARD

Passive fall protection for elevated surfaces and roof edges.

## ROOFGUARD XPRESS

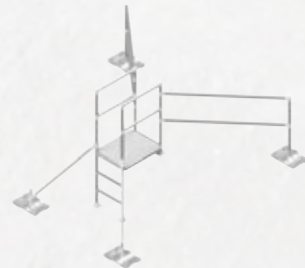


Temporary or permanent passive fall protection for elevated surfaces and roof edges.

## HATCHGUARD

Protection for roof openings and hatches.

## ROOFSTEP LD



Self supporting ladder and platform combination for safe and easy elevation between surfaces.

## SKYLIGHT GUARDRAIL

Protection for skylight openings.

## WARNING LINES



Visual warning to alert workers of a potential fall hazard.

## ROOFSTEP XS

Ladder and platform combination for safe and easy movement over obstructions.



# MODULAR SYSTEMS

**WORKING AT HEIGHTS COMPLIANCE**  
Satisfies OSHA (1926 Subpart M and 1910 Subpart D) requirements for fall protection.

**ERGONOMIC DESIGN**  
No single component in a RoofGuard system weighs over 50 lbs.



**FULLY CUSTOMIZABLE**

Modular design that allows for easy installation and for systems to fit any space or configuration.

**PASSIVE SYSTEM**

Once installed, this system eliminates the requirement of working at heights PPE and training.

**NO ROOF PENETRATION**

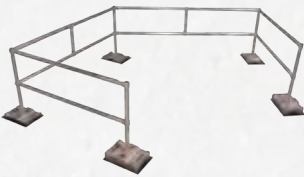
Stackable and nested baseplates engineered to provide counterweighted systems that don't pierce your roof membrane.

**EDGE PROTECTION**



9', 12', 18' and 27' standard kits available.

**CUSTOM CONFIGURATIONS**



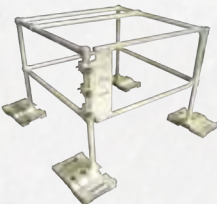
Variable fittings allow for 0 - 90 degree angles.

**SKYLIGHT GUARDRAIL**



4' x 4', 4' x 6', 6' x 6' and 9' x 9' standard kits available.

**HATCHGUARD**



4' x 4' and 4' x 6' standard kits available with self closing gate.

**MEZZANINE GUARDRAILS**

Mezzanine guardrail systems allow workers to access elevated areas within your facility or create more space inside your facility while still meeting the working at heights requirements set out by OHSA. Custom systems based on your requirements.



**ROOFSTEP LD (LADDER SERIES)**

Ladder Series (LD) RoofStep systems help workers move from one level to another, and have guardrails on the upper side to help prevent a fall to the lower level. Each system is self supported with 45° braces and RoofGuard's non-penetrating, nested baseplates. Standard kits available in all configurations from 3' to 5' up an elevation and 1' to 3' down.

**ROOFSTEP XS (CROSSOVER SERIES)**

Crossover Series (XS) RoofStep systems help workers move up and over obstructions to similar roof levels. Each system is self supported with 45° braces and RoofGuard's non-penetrating, nested baseplates and include a 6' platform and guide rails. Standard kits available in all configurations from 3' to 5' up and over obstacles.



## THE HIERARCHY OF FALL PROTECTION





# SAFETY NETTING SYSTEMS

SCAN ME



BROWSE OUR SOLUTIONS

RACKGUARD



An engineered solution designed to make racking systems safer. RackGuard is installed on the back of storage racking to protect aisles, work areas, machinery and people from products that may become dislodged and fall to the ground below.

## TRUCK NETTING

Ensure you have adequate fall protection for your employees and materials while loading and unloading using our truck netting systems.



## BARRIER NETTING

Engineered vertical barrier netting systems around stacked boxes and walkways to provide protection against falling materials.



## CONVEYOR NETTING

System provides complete coverage around and underneath all conveyor applications to catch potential falling objects.



## PIT NETTING

Our custom pit netting systems provide reliable fall protection for employees around oil pits and other floor openings.



## SPORTS NETTING

A complete line of both indoor and outdoor sports netting, designed specifically to keep facilities, participants and spectators safe.







Having a pathway behind a racking structure can pose a potential working hazard. Working alongside one of our distributor partners, we installed several RackGuard netting systems over multiple bays in a prominent warehouse facility located in Ontario to provide protection from products potentially falling behind the racks.

# PROTECTING PEOPLE & PRODUCTS

Our RackGuard system has been designed specifically for industrial racking applications. Each system utilizes engineered offset and extension brackets, custom sized netting panels, and cable systems to adapt to any racking configuration and maintain safety standards to create a soft catch solution that protects your racks, your products and your people. RackGuard systems meet OHSA, ANSI, NFPA and FDA standards for safety and engineered drawings are included with every installation.

## FOUR SYSTEMS. CUSTOMIZED CONFIGURATION.

### STANDARD OFFSET

Engineered offset brackets run rigging cables and allow netting panels to be installed a certain distance from the face of the racking allowing for pallet/product overhang. Standard offsets have an allowance for 4" or 6" settings, but offsets are available in sizes ranging from 2" up to 12".



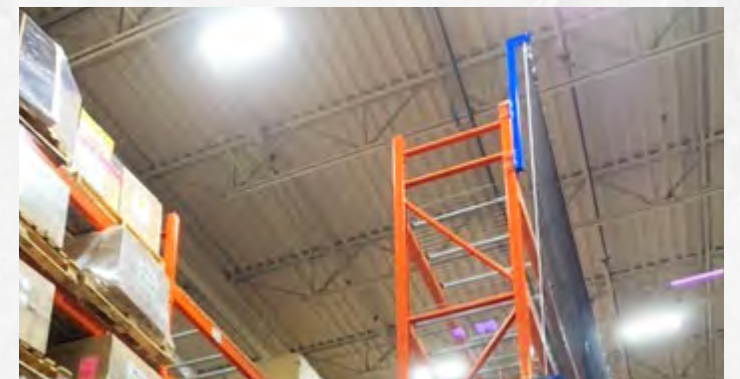
### FLUSHMOUNT

These netting systems sit flush to the racking system, helping to ensure that no product will fall. Ideal for applications where there is no pallet overhang or product is loaded by hand. This system uses the same components as our standard netting, except for the use of flushmount brackets to ensure the netting panel is as close to the rack as possible.



### FRAME EXTENSIONS

With the emphasis on utilizing as much warehouse space as possible, companies are storing products higher on their racks. Engineered frame extensions are available to increase the height of the frame and allow netting protection for products on the upper load beam. Extensions come in 12", 24", 36", 48", 60" up to a max of 72" variations. Custom options are available.



### FLUE SPACE

The flue space between racking systems is often an area that sees a high volume of product falls and damages that workers are unable to access. Our Rack Netting System can be installed within this space to help reduce product loss and keep products from getting mixed up with another pallet load.





## TRUCK NETTING

We have designed several types of truck netting systems to protect employees (and outside drivers) from potential falls when working on flatbed trailers by providing a "soft catch." We offer three standard configurations as well as custom systems, so your specific needs and your environmental requirements will be taken into consideration.

### STATIONARY

Designed to mount directly to your facility's floor or columns for a permanent passive fall protection solution.



### PORTABLE

Weighted bases with fixed vertical columns that can be moved to accommodate truck sizes and locations. Netting is attached to the stake pocket of the flatbed with wire rope and custom brackets.



### PIVOTING

Ideal for facilities that have multiple use bays, or where customers do not want to connect directly to the flatbed. Arms swing out from fixed columns and butt up against the side of the flatbed.



## BARRIER NETTING

Barrier Netting systems can fulfill many different purposes. This client was in need of a solution that created restricted access to valuable merchandise in their warehouse.



### VERTICAL

Our systems are designed based on the total height of coverage, weights of each stacked box and the total length of coverage. Freestanding or structurally integrated posts are engineered and installed for each application to mount cables and netting to surround the stacked materials.

### HORIZONTAL

Our horizontal netting systems are installed within racking structures to ensure the safety of workers who are entering racking bays to access products and are at risk of having a box fall from an upper level.



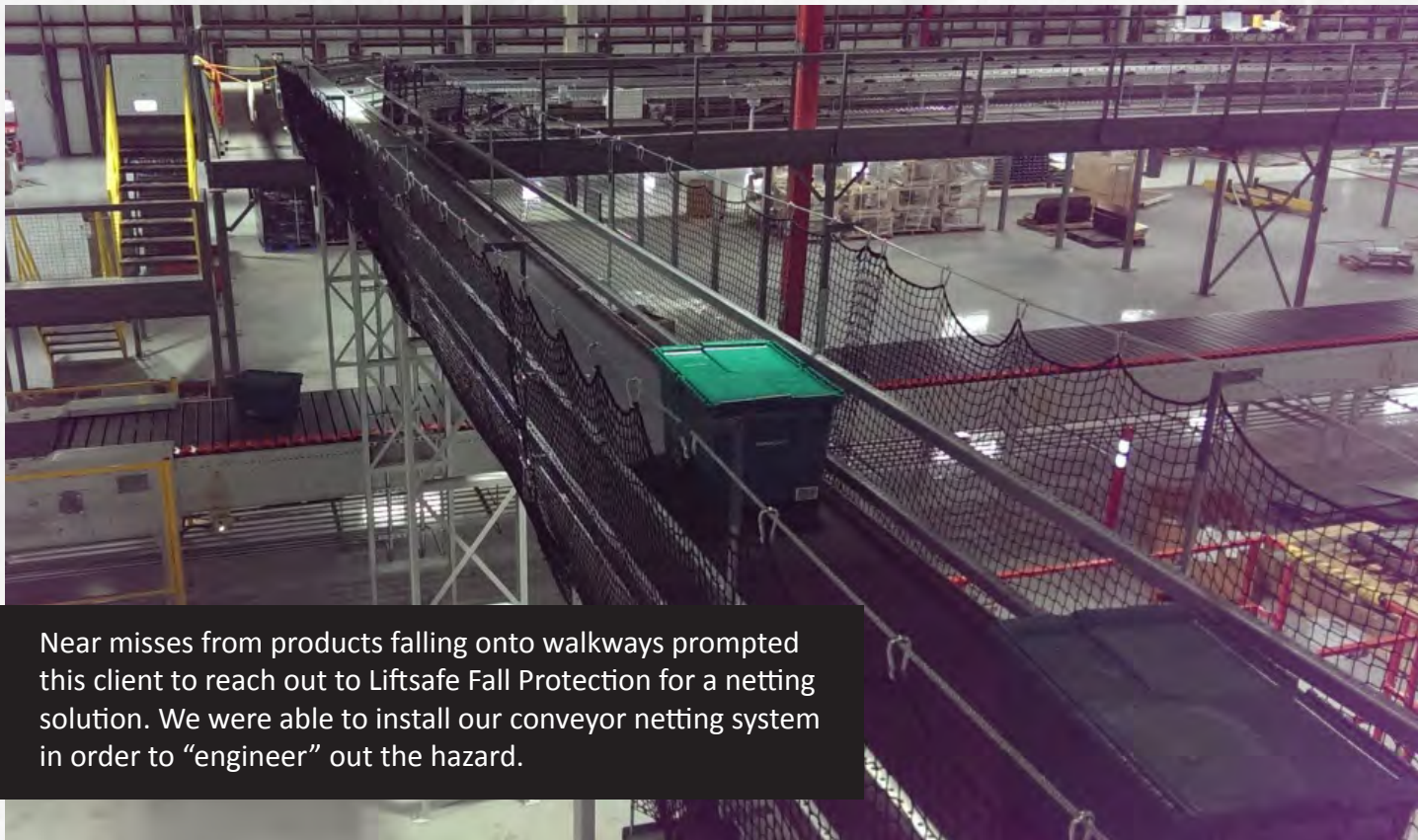


## CONVEYOR NETTING



Implementing proper conveyor netting systems will result in an immediate increase in safety throughout your facility. Our netting systems can be customized to every conveyor set-up using various net types that won't rust, peel, rot or dent like metal containment systems. Fine mesh debris liners can also be added for increased protection to workers below.

Our conveyor netting systems utilize high strength, fire-resistant 1" mesh netting panels, combined with wire rope to secure any product falls with a "soft catch" solution.



Near misses from products falling onto walkways prompted this client to reach out to Liftsafe Fall Protection for a netting solution. We were able to install our conveyor netting system in order to "engineer" out the hazard.

## PIT NETTING



Fall hazards are a major concern when an opening in the floor is not properly protected. All provinces require such openings to be guarded or covered when not in use. Netting systems are a safe and effective solution that meets or exceeds fall protection requirements.

Oil pit netting systems are specifically designed to suit your existing service bays and provide a reliable solution with minimal impact on day-to-day operations.

## SPORTS NETTING



We offer a complete line of both indoor and outdoor sports netting, designed to keep facilities, participants and bystanders safe. Our Canadian made sports netting solutions can be used for baseball diamonds, hockey rinks, driving ranges and more.

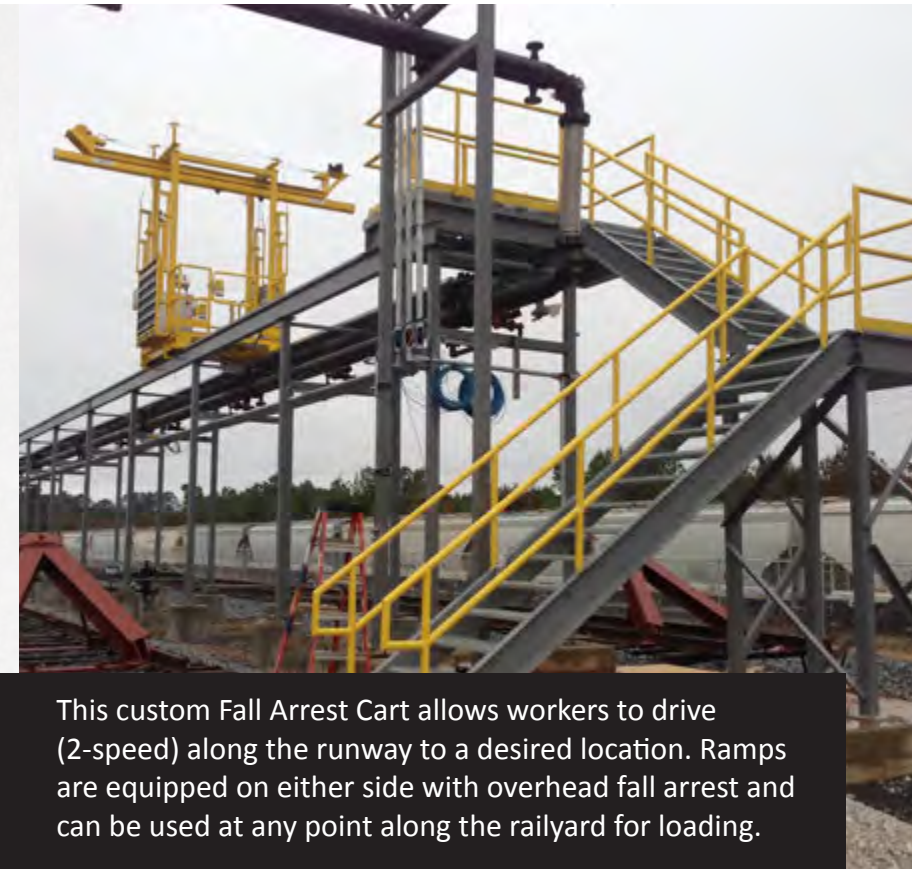
As injury rates on sports fields continue to rise, the expansion of protective netting is a recommended solution to ensure the safety of all participants.



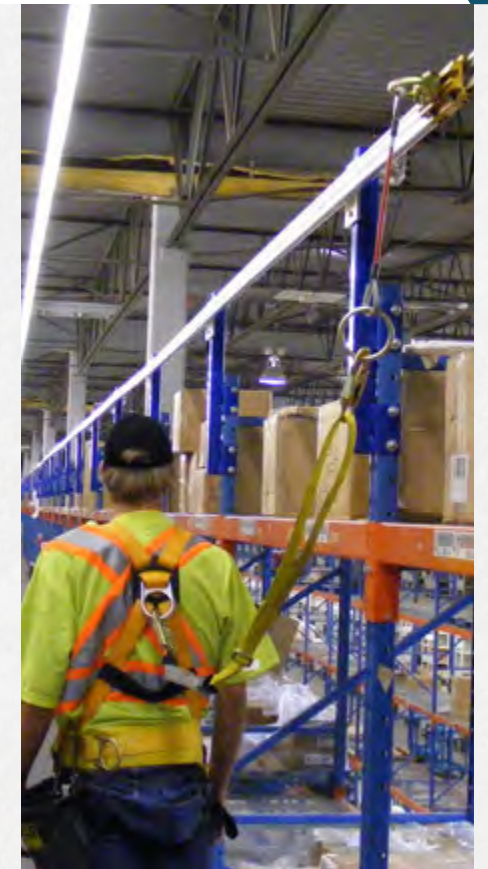
# ENGINEERED SAFETY

Fall protection is much more than beams, anchors and bolts. It is a complete system that has been engineered and designed for a specific application. Liftsafe Fall Protection offers fully compliant, custom tailored engineered personal fall arrest systems and fall protection products for multiple applications.

- Aviation solutions
- Tanker car access solutions
- Pic mod systems
- Davit bases and cranes
- Horizontal lifelines
- Custom access ladders



This custom Fall Arrest Cart allows workers to drive (2-speed) along the runway to a desired location. Ramps are equipped on either side with overhead fall arrest and can be used at any point along the railyard for loading.



## FALL ARREST



STOPS A FALL THAT HAS  
ALREADY HAPPENED

## FALL RESTRAINT



DESIGNED TO PREVENT FALLS  
FROM HAPPENING



This Horizontal Life Line (HLL) system installed at a dam allows workers to remove obstructions after weather events, and perform minor repairs on the spillway as needed while being tied off from a potentially slippery and dangerous surface.



# FIXED ACCESS LADDERS

## OPTIONS

### NO CAGE



Standard heights range from two rungs to 18 feet.

Custom options available.

### CAGE



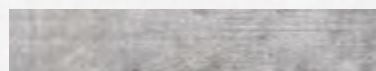
Standard heights range from 18 feet and above.

Custom options available.

## MATERIALS



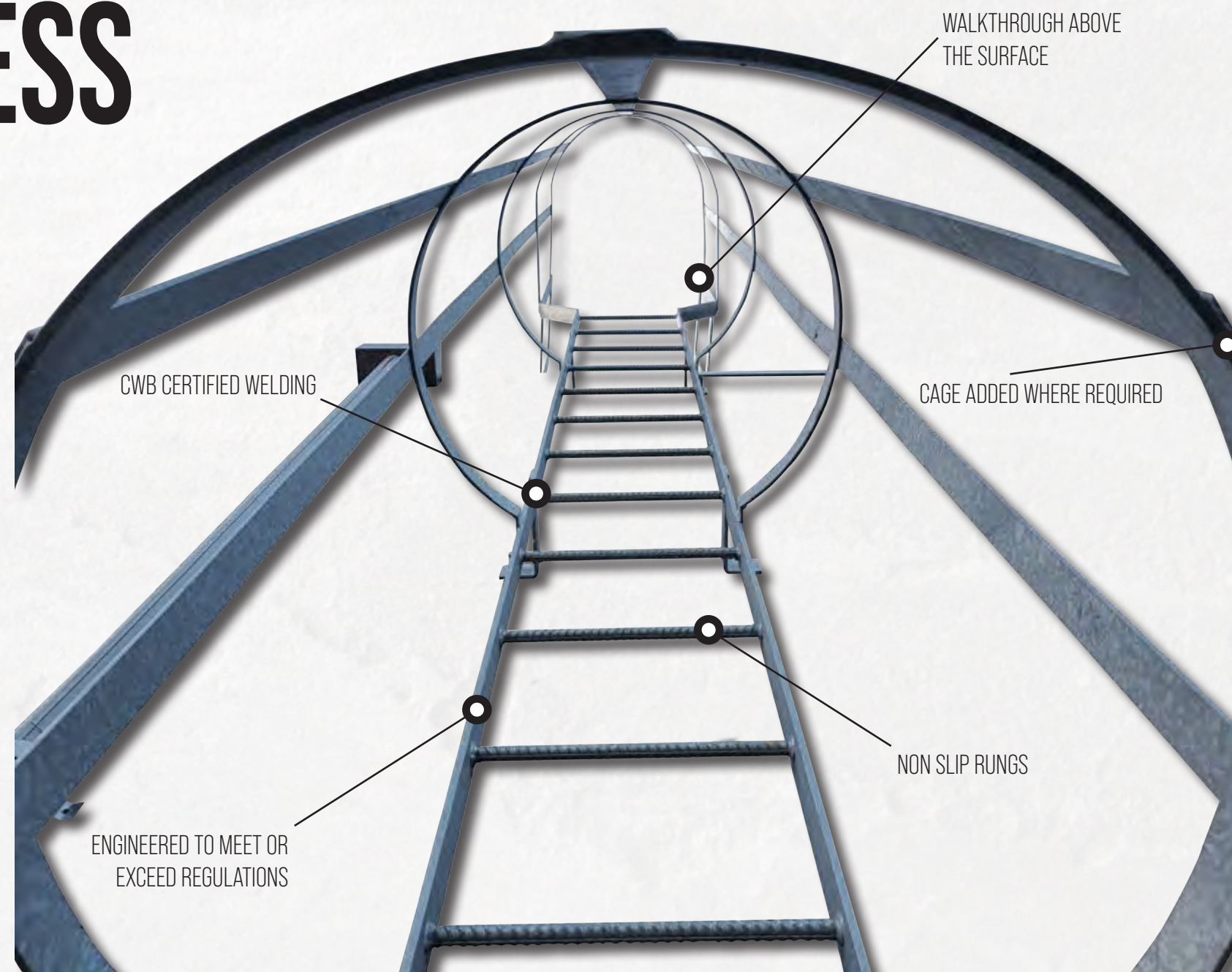
STEEL



ALUMINUM



GALVANIZED STEEL



## OPTIONAL ADD-ONS

Ontario P.Eng. Sealed Drawing

Parapet Platform System

Anti-Access Door System

LadderGuard Kit

Safety Gate

Lad-Saf™ Ladder System (see below)



SCAN ME



BROWSE OUR SOLUTIONS



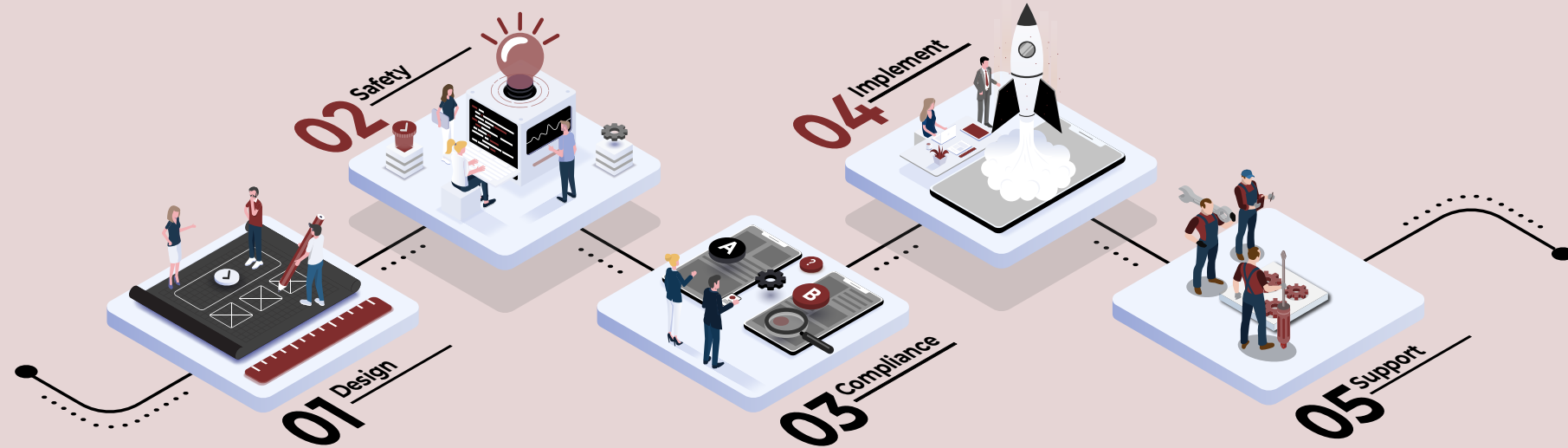
CWB WeldQuality  
Registered Co.  
QMBLIFTS121

A complete line of fixed access ladders which are custom fabricated in order to meet your exact application. All of our fixed access ladders are designed to be a permanent and safe means of rooftop, mezzanine or loading dock access and are engineered to meet federal and provincial regulations.



# DESIGN ENGINEERING

## OUR PROCESS

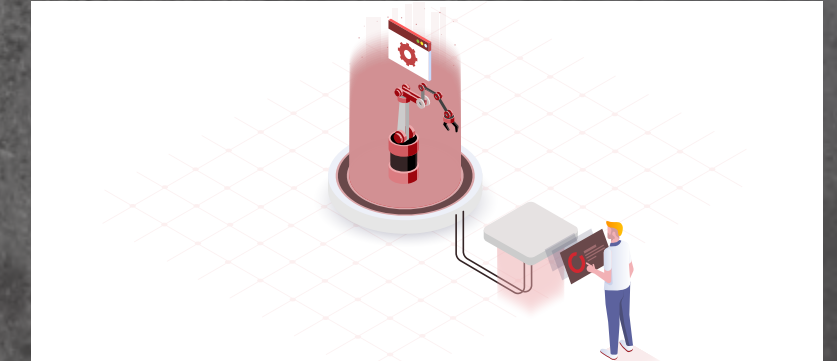


From the cranes that can add capacity to your facility, to the ergonomic material handling devices that can eliminate work-related repetitive strain injuries, Liftsafe brings together our design engineering team and cutting-edge design software to deliver turnkey solutions for our clients in multiple industries. We take a collaborative approach with our clients on each project, as we support them throughout the full project life cycle, from concept to detailed design and ongoing inspections, preventative maintenance and repairs.

SCAN ME

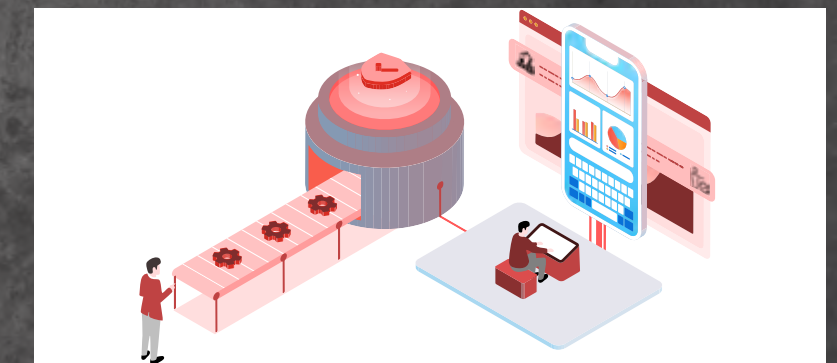


BROWSE OUR SOLUTIONS



## REVERSE ENGINEERING SERVICES

Often lifting devices are made in-house or have no proper documentation for the item's intended lifting capacity. The Liftsafe team can work with your team to reverse engineer your solution in order to provide you with proper documentation ensuring the item is safe to use by law and meets the requirements of its intended capacity.



## PRE-START HEALTH AND SAFETY REVIEWS

In Ontario, Pre-Start Health and Safety Reviews (PSHSRs or PSRs) are required before certain equipment or processes are put into operation. Liftsafe's engineering team can provide you with consultation and documentation to keep you in compliance with OHSA, ensuring your equipment is ready to use.



# CUSTOM FABRICATION

Offering a collaborative approach with our in-house engineering team to create a wide variety of custom fabrication projects that help businesses improve the safety and productivity of their operations. With over 30,000 sq. ft. of fabrication space that includes a machine shop, fabrication shop, paint booth and assembly area, the Liftsafe Group has the capability to take your project from start to finish.

SCAN ME



BROWSE OUR SOLUTIONS



## STEEL FABRICATION

CWB certified steel fabrication (CSA Standard W47.1, Division 2) engineered solutions for material handling, manufacturing processes and overall industrial safety.



## ALUMINUM FABRICATION

CWB certified aluminum fabrication (CSA Standard W47.2, Division 2) engineered solutions for material handling, elevation access, manufacturing processes and overall industrial safety.



Phone: 519 896-2430

## CUSTOM MATERIAL HANDLING

In addition to the full range of ergonomic material handling equipment already offered, we also offer a collaborative approach to solving more complex material handling problems that increase productivity and capacity while reducing the risk of employee injuries.



## ODD SHAPES

Some products require a custom solution due to an odd shape. This client was in need of an ergonomic lifter that could safely lift windshields without risking injury to their operators.



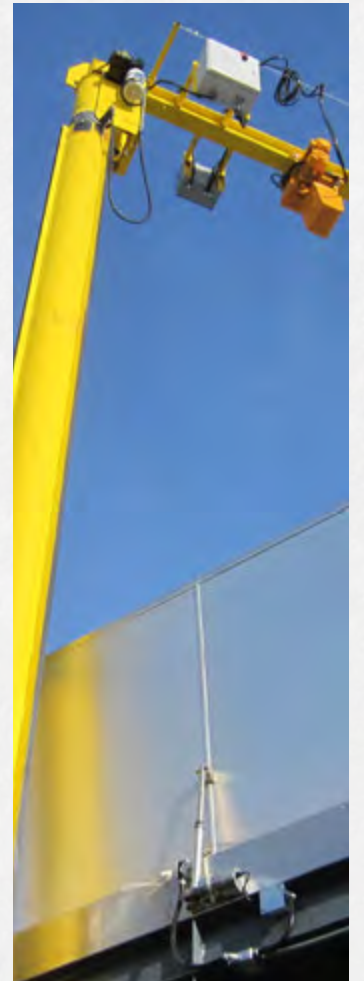
## PORTABLE

A manufacturing client was in need of a portable solution for moving heavy metal sheets from one area to the other without the use of a crane. We were able to design an attachment that worked with an existing standard product (Lift-O-Flex) as a solution.



## TOOLING

In some cases, the existing equipment within a facility can be fitted with the right tooling to provide a winning solution. This client needed help designing a hitch that worked with a tugger and the industry standard carts in their facility.



## CRANES

We were able to work with this client to design, manufacture and install this custom telescopic jib crane that was designed to lift products from inside the facility for loading and transport outside and vice versa.

## CUSTOM MATERIAL HANDLING



# STEEL FABRICATION

Steel solutions such as ergonomic cranes, lifting devices and tables, spreader bars, platforms and mezzanines, fixed access ladders, machine guarding, transfer carts and upenders are available through our custom fabrication engineering team.

Although we have an extensive standard product listing of steel fabricated products, many of our clients collaborate with our in-house engineering and design team to find a custom/unique solution for their specific facility needs.

## SAFETY & QUALITY

Designed with a focus on exceptional quality while protecting your company and its employees.

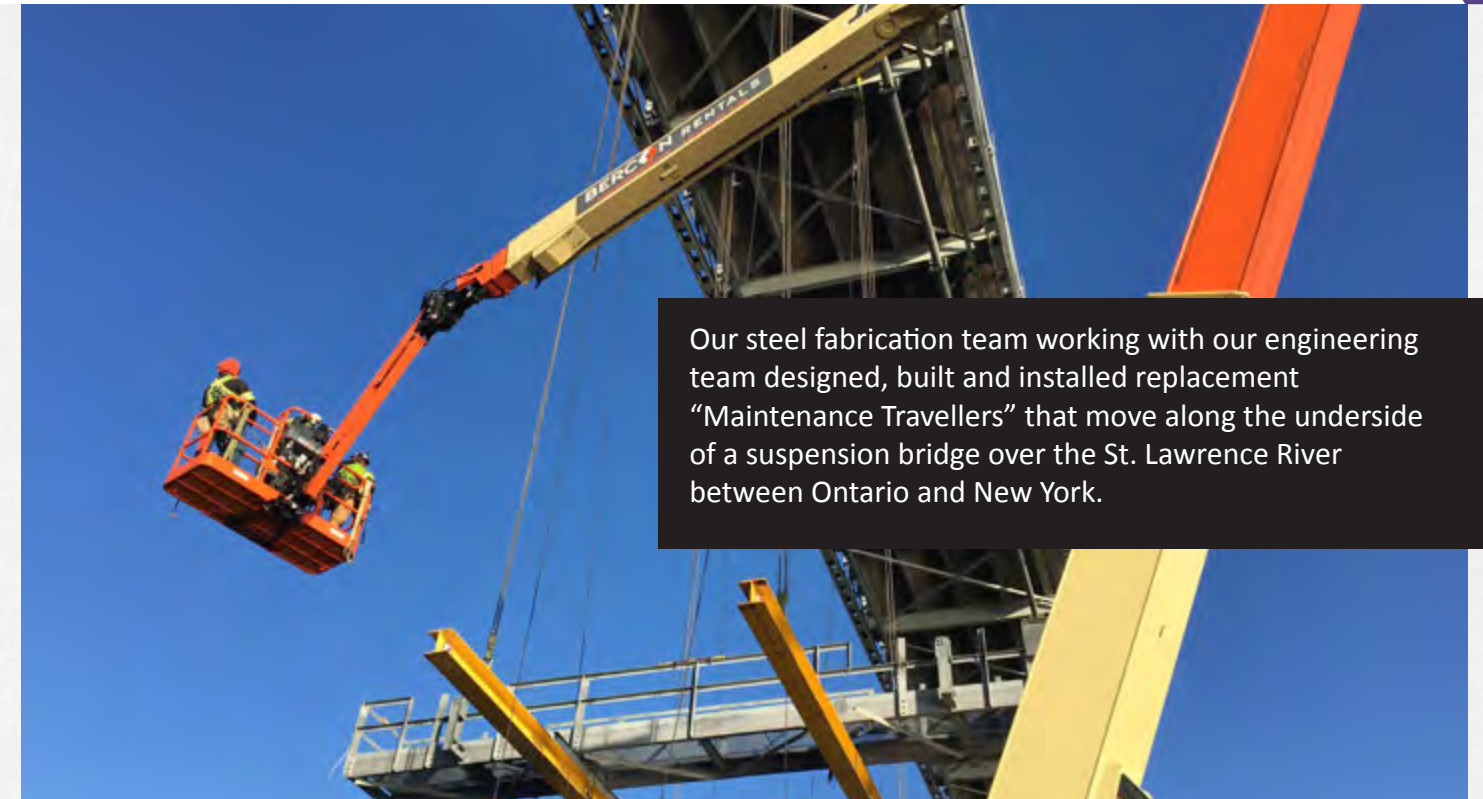
## EXPERIENCE & LONGEVITY

Liftsafe has been recognized as an industry leader for more than 25 years in the fabrication space.

## CREATIVITY & INNOVATION

A true customer first philosophy. We specialize in unique, custom and standard fabricated products.

Phone: 519 896-2430



Our steel fabrication team working with our engineering team designed, built and installed replacement "Maintenance Travellers" that move along the underside of a suspension bridge over the St. Lawrence River between Ontario and New York.



- Access stands, platforms and mezzanines
- Anti-access gates and panels
- Cross-over platforms and ladders
- Fixed access ladders and staircases
- Overhead cranes, jib cranes, gantry cranes, and workstation cranes



- Machine guarding
- Safety products and systems
- Sheet and pallet lifters
- Spreader bars
- Transfer carts
- Upenders



[liftsafeinspections.com/steel-fabrication](http://liftsafeinspections.com/steel-fabrication)



# ALUMINUM FABRICATION

Liftsafe Engineering and Service Group provides our clients with CWB certified aluminum fabrication (CSA Standard W47.2, Division 2) engineered solutions for material handling, elevation access, manufacturing processes, and overall industrial safety.

Aluminum solutions such as access stands and platforms, gates and panels, staircases, machine guarding and cranes are available through our custom fabrication engineering team.



One of the most unique requests we have ever gotten from a client was to create the frame for a pirate ship. A private boat tour company in Toronto worked with the engineering and fabrication team at Liftsafe to create what will eventually be a pirate ship party boat.



CWB WeldQuality  
Registered Co.  
QMBUFTS121





# CONTACT US



Toll Free (Liftsafe Group)  
1-800-977-2005



Toll Free (PARCS)  
1-866-496-6600

Liftsafe Group  
519-896-2430

PARCS  
519-571-0003



[liftsafegroup.com](http://liftsafegroup.com)



[info@liftsafegroup.com](mailto:info@liftsafegroup.com)

Proudly providing service to clients across Ontario and Canada-wide. Locations in Ayr (KW), Toronto and Windsor.